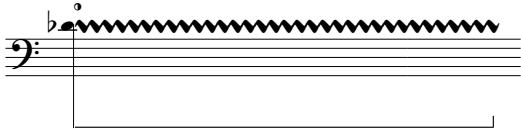


# NOTATION FOR THE SOLOIST

## SPECIAL PHRASES



Very fast articulated phrase using free choice pitches within the relative register positions. The number of pitches shown are not to be treated as the correct number played.



String pulled to the side of the fingerboard in the manner of the now almost defunct Italian technique then rapidly oscillated in the manner of a very fast vibrato.



Finger the harmonic at the given node point, gently depress the string and quickly glissando to give a microtonal glissando of the harmonic. The resultant sound should imitate a Sarangi.



Glissando over the natural harmonics of the given strings.

## TABLE OF HARMONICS



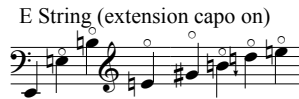
G String



D String



A String



E String (extension capo on)

## NOTEHEADS



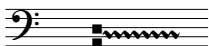
Strings 'behind' the bridge.



Pitch hammered-on by the left hand.



Pitch hammered-on by the left hand followed by glissando of the actual pitch and the resultant bi-tone.



Rapidly oscillate the nut of the bow between the given strings shifting the position of the bow constantly.

## SPECIAL SYMBOLS

+ Left hand pizzicato.

⊗ \_\_\_\_\_ Slow the bowing and add excessive arm weight to produce scratch noise.

‡ Quarter sharp

‡‡ Three-quarter sharp

‡ Quarter flat

‡‡ Three quarter flat.

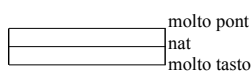
‡ Natural harmonic sounding a quarter flat.

## SPECIAL STAVES

### Amplification



### Bowing



This staff is only used in certain places to provide a clear indication of bow positions.

When the staff is not shown, the bowing is clearly to be assumed as normal.